

# Economic Downturn Response Team

To assist our clients in navigating the fallout from the current economic dislocation stemming from COVID-19, and in particular, the expected impact on financing transactions, Schulte Roth & Zabel has established the Economic Downturn Response Team.

The team is a multidisciplinary group ready to advise our lender and borrower clients in the increasingly complicated landscape in which we all find ourselves today. As delinquencies and defaults are expected to increase dramatically, the ability to work out each unique situation, whether in-court or out-of-court, and whether by consensual process or otherwise, will be critical. We offer a full suite of services to help you navigate through this market downturn. Please contact any member of the group with any questions.



**Harry S. Davis**

Partner  
Litigation  
+1 212.756.2222  
harry.davis@srz.com



**Craig Stein**

Partner  
Finance & Derivatives  
+1 212.756.2390  
craig.stein@srz.com



**William H. Gussman, Jr.**

Partner  
Litigation  
+1 212.756.2044  
bill.gussman@srz.com



**Robert J. Ward**

Partner  
Litigation  
+1 212.756.2166  
robert.ward@srz.com



**Adam C. Harris**

Partner  
Business Reorganization  
+1 212.756.2253  
adam.harris@srz.com



**Julian M. Wise**

Partner  
Real Estate  
+1 212.756.2135  
julian.wise@srz.com



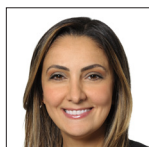
**Dan A. Kusnetz**

Of Counsel  
Tax  
+1 212.756.2095  
dan.kusnetz@srz.com



**Boris Ziser**

Partner  
Finance & Derivatives  
+1 212.756.2140  
boris.ziser@srz.com



**Kristine Manoukian**

Partner  
Business Reorganization  
+1 212.756.2466  
kristine.manoukian@srz.com



**Elie Zolty**

Partner  
Tax  
+1 212.756.2052  
elie.zolty@srz.com