

**FIRM NEWS**

## Schulte Roth & Zabel LLP Advised Associated Materials in a Merger with SVPGlobal

**March 24, 2022**

Schulte Roth & Zabel LLP advised Associated Materials in its merger with funds managed by SVPGLOBAL, a global investment firm with over \$18 billion of assets under management, which merger was completed earlier this month. Associated Materials is a vertically integrated building products company with \$1.6 billion in annual revenues and a market leader in vinyl windows, vinyl & composite cladding, and metal siding and trim. Associated Materials has over 4,400 employees and operates its own 126 Alside and Gentek supply centers in the United States and Canada along with 11 manufacturing facilities. The merger positions Associated Materials for continued growth and success.

The deal is led by Partners Daniel Eisner and Kristine Manoukian, and Associate Jamie I. Freedman. The full deal team includes Partners Seth R. Henslovitz, Ian L. Levin, Joseph Reich, Ronald E. Richman, Gregory D. Ruback, Gary Stein and Michael E. Swartz; Of Counsels Howard B. Epstein and Ronald B. Risdon; Special Counsels Adam B. Gartner, Scott A. Gold, Scott M. Kareff, Theodore A. Keyes, Gregory L. Kinzelman and Amiel Y. Mandel; Associates Jacob A. Gach, Matthew L. Saathoff, Aaron Schwed and Sheuvaun F. Vernon; and Law Clerks Abigail B. Castaldi and William J. Sobel.



---

## Related People



**Daniel  
Eisner**

Partner  
New York



**Kristine  
Manoukian**

Partner  
New York



**Jamie  
Freedman**

Associate  
New York



**Seth  
Henslovitz**

Partner  
New York



**Ian  
Levin**

Partner  
New York



**Joseph  
Reich**

Partner  
New York



**Ronald  
Richman**

Partner  
New York



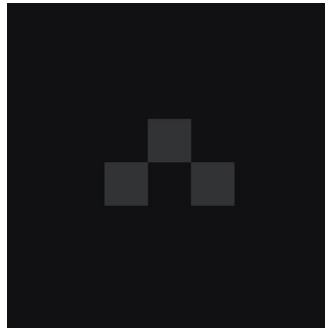
**Gregory  
Ruback**

Partner  
New York



**Michael  
Swartz**

Partner  
New York



**Howard  
Epstein**

Of Counsel  
New York



**Ronald  
Risdon**

Of Counsel  
New York



**Adam  
Gartner**

Special Counsel  
New York



**Scott  
Gold**

Special Counsel  
New York



**Scott  
Kareff**

Special Counsel  
New York



**Theodore  
Keyes**

Partner  
New York



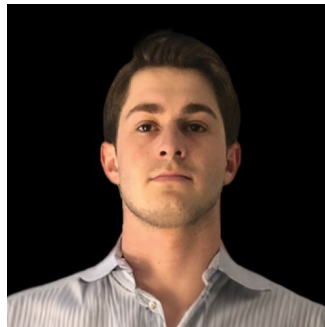
**Jacob  
Gach**

Associate  
New York



**Sheuvaun  
Vernon**

Associate  
New York



**William  
Sobel**

Associate  
New York

